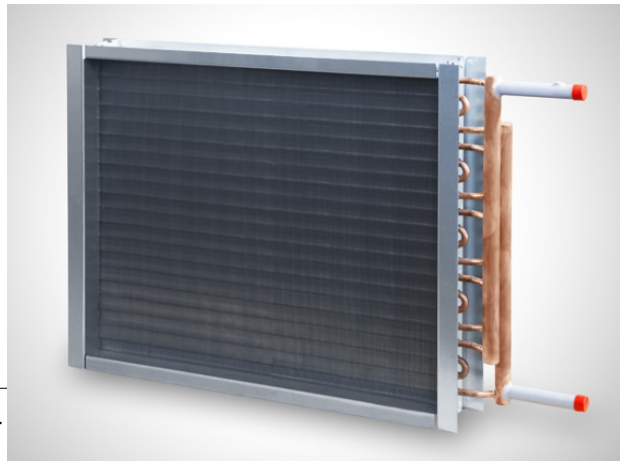




BAC 90 - 90 KW heater
630 x 700 mm



W 3S3 G 03 26 0578 254 013 1 A L -

TECHNICAL DATA :

Total capacity available.....:	[kW]	90,0
Air flow inlet.....:	[m3/h]	6284
Air flow outlet.....:	[m3/h]	7200
Air flow Standard.....:	[m3/h]	7000
Air mass flow.....:	[g/s]	2333
Dry bulb air inlet.....:	[°C]	-10,0
Dry bulb air outlet.....:	[°C]	28,4
Air pressure drop.....:	[Pa]	206
Inlet air velocity.....:	[m/s]	4,65
Outlet air velocity.....:	[m/s]	5,32
Standard air velocity.....:	[m/s]	5,18

Fluid.....:		Water
Specific mass.....:	[kg/m3]	977
Specific heat.....:	[kj/kg.k]	4,19
Thermal conductivity.....:	[W/m.k]	0,661
Viscosity.....:	[Pas.sec]	0,0004
Total fluid pressure drop.....:	[kPa]	14
Inlet temperature.....:	[°C]	80,0
Outlet temperature.....:	[°C]	60,0
Fluid flow.....:	[m3/h]	3,95
Fluid velocity.....:	[m/s]	1,2

Pressure drop in headers exceeds 30% of the total fluid pressure drop. (36%)

Tubes type.....:		Smooth
Tube material.....:		Copper
Fin material.....:		Alu
Height/Width (finned).....:	[mm]	650,0 / 64,95
Connection inlet.....:	[mm]	37 / 42
Connection outlet.....:	[mm]	37 / 42 - Same side
Surface area.....:	[m2]	17,8
Circuit volume.....:	[dm3]	3,2